



This is the T4T-EXW ReadMe file

Document version 0.83. December 2007.

Contents

- Disclaimer
- What you can do with T4T-EXW
- Installing T4T-EXW
- Running T4T-EXW (2 sections)
- Demo mode notes
- Known bugs

Disclaimer

ITLA makes no warranty, express or implied, that T4T-EXW will work as advertised in all configurations of all operating systems. ITLA waives any and all liability for direct and consequential damage that may be caused by T4T-EXW. By using T4T-EXW, you agree to have read, understood, and accepted this disclaimer with no reservations whatsoever.

What you can do with T4T-EXW

You have been asked to translate an Excel file into your target language. You know that it takes extra work to do that (as opposed to overwriting a Word document which is fairly straightforward). T4T-EXW will extract all the text from the Excel file and export it to a Word document which you can expand into a reusable glossary by adding the target-language side. Subsequently, T4T-EXW will automatically translate everything in your source-language Excel document that it finds in your Word glossary. If you already have a glossary, you can use that and let T4T-EXW append source-language strings from the Excel file that it does not yet contain.

Installing T4T-EXW

1. Make sure T4T-Installer.doc and T4T-EXW.dot are **both** in the **same folder**. It makes no difference where this folder is located or what its name is.
2. PC users: Set Excel's security settings to low for the duration of the installation process.
3. Double-click on T4T-Installer.doc. First, you will see a macro warning similar to this one:



Click on Enable Macros.

Then, you will see the window shown in Fig. 1. The white box with previously installed versions of T4T modules will be empty if you are a first-time user.

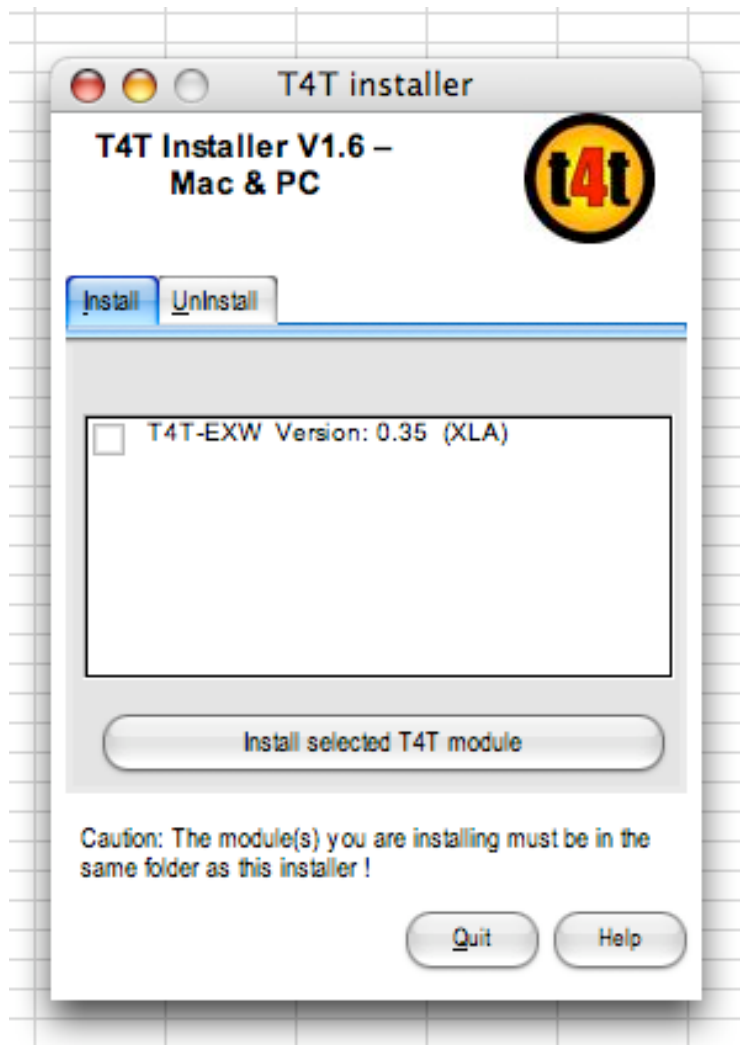


Fig 2



Fig. 3

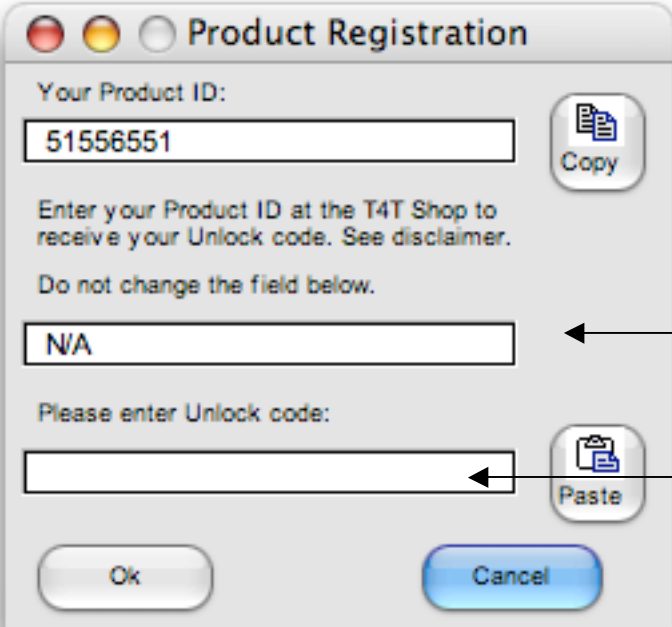
← Fig.1

Click on the **EXW** checkbox, then on "Install selected T4T module". A small window (Fig. 2 or similar) will tell you that installation is complete.

Click on OK, then click on "Quit" at the bottom of the T4T installer window (Fig. 1). We recommend that you now quit and restart Excel.

4. After T4T-EXW has been installed, you will see the T4T-EXW toolbar icon (Fig. 3) somewhere on your screen, usually on the far left-hand side. You can grab it and drag it to a convenient location **in the toolbar** with your mouse. It will reappear at that location when you next start Excel. If you have a T4T menu, EXW will be added to it after you launch EXW for the first time by clicking on the toolbar icon. If you wish to purchase this tool, click on T4T > EXW > Register and write down the Product ID that is displayed in the registration window. You will need to enter it in the T4T shop to buy your unlock code.

The registration window looks like this:

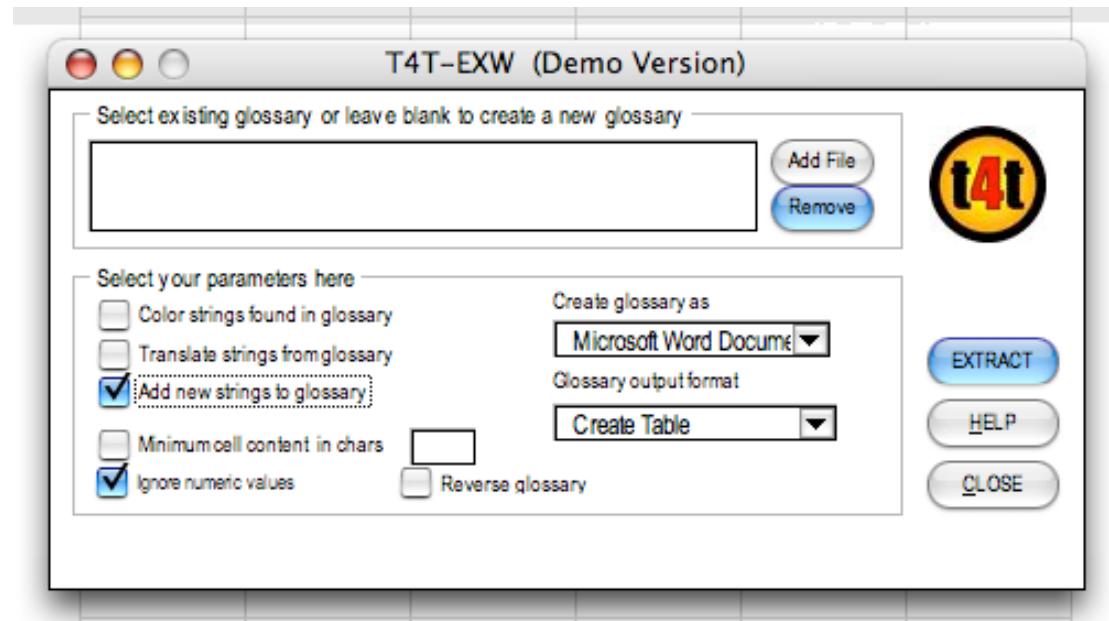


The screenshot shows a 'Product Registration' dialog box with the following elements:

- Title bar: Product Registration
- Field 1: 'Your Product ID:' with the value '51556551' and a 'Copy' button to its right.
- Text: 'Enter your Product ID at the T4T Shop to receive your Unlock code. See disclaimer.' and 'Do not change the field below.'
- Field 2: A text box containing 'N/A' with an arrow pointing to it from a callout box that says 'Do not change this'.
- Field 3: 'Please enter Unlock code:' with an empty text box and a 'Paste' button to its right. An arrow points to this field from a callout box that says 'Enter your unlock code here'.
- Buttons: 'Ok' and 'Cancel' at the bottom.

You can purchase your unlock code here:
<http://www.itla.ch/t4t/shop.php>

Running T4T-EXW – Extracting text from an Excel document



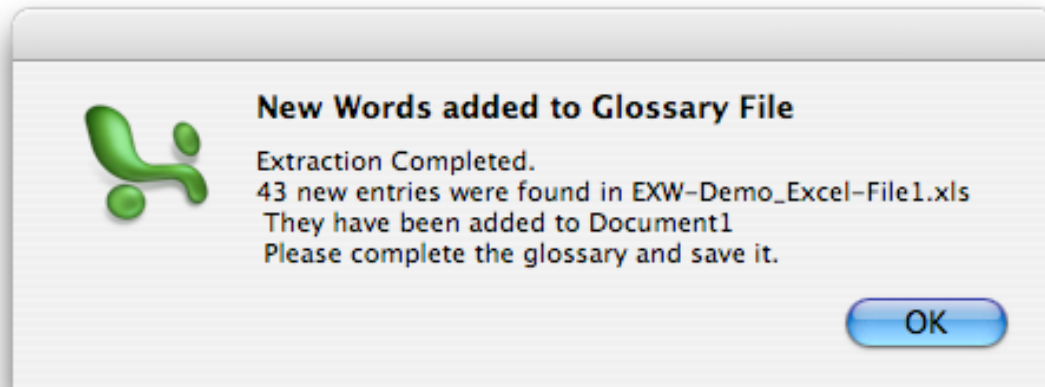
This is the T4T-EXW control panel

1. Make sure you have an Excel file open. We recommend using EXW-Play-With-Me-File.xls for testing purposes (included in the EXW package). This is what it looks like:

Checkliste für Inflight-Test Ultra Light Carpet						
1						
2						
3	Interne Projekt Nr. 50050 / PO 339931					
4						
5	Qualität:					
6	Ultra Light Carpet, 100% PES, Gewicht 880 gr/m2					
7	Artikel: 81568 / 992					
8	Breite 127 cm					
9	Legort: Gang					
10	Flugzeug Typ:					
11						
12						
13	Installationsmerkmale		Bewertung			
14			sehr gut	gut	genügend	ungenügend
15	Flexibilität des Teppichs					
16	Haftung mit Microplast					
17	Verbrauch Microplast					
18	Schneidbarkeit / Zuschnitt					
19	Verlegbarkeit					
20	Kurbeln der Schnittkante					
21	Zusatzinformationen Thomson Fly:					
22						
23						
24						
25						
26						
27						
28						
29						

Now click on the EXW toolbar icon to launch T4T-EXW.

2. Click on “Add new strings to glossary” and leave everything else in the control panel unchanged.
3. Now press “Extract”. When T4T-EXW is done, you will see a summary like this:



The result

☞

This is part of the one-sided glossary created by T4T-EXW☞

☞

Checkliste für Inflight-Test Ultra Light Carpet☞	☞	☞
Interne Projekt Nr. 50050 / PO 339931☞	☞	☞
Qualität:☞	☞	☞
Ultra Light Carpet, 100% PES, Gewicht 880 gr./m2☞	☞	☞
Artikel: 81568 / 992☞	☞	☞
Breite 127 cm☞	☞	☞
Legort: Gang☞	☞	☞
Flugzeug Typ:☞	☞	☞
Installationsmerkmale☞	☞	☞
Bewertung☞	☞	☞
sehr gut☞	☞	☞
gut☞	☞	☞
genügend☞	☞	☞
ungenügend☞	☞	☞
Flexibilität des Teppichs☞	☞	☞
Haftung mit Microplast☞	☞	☞
Verbrauch Microplast☞	☞	☞
Schneidbarkeit / Zuschnitt☞	☞	☞
Verlegbarkeit☞	☞	☞
Kurbeln der Schnittkante☞	☞	☞

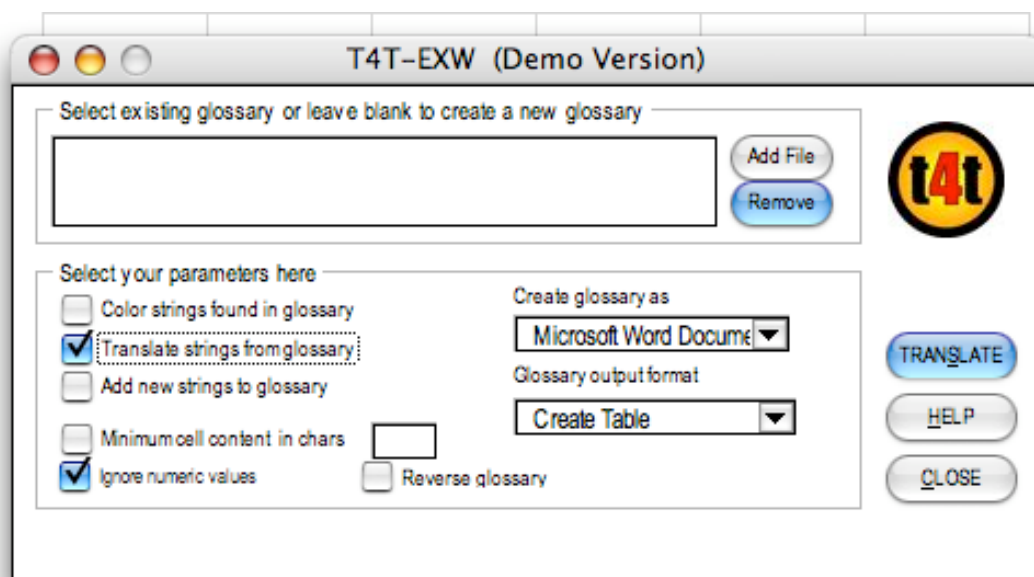
☞

Now add the target-language side. Not that duplicate strings such as “genügend” have been filtered out, so even though this term occurs multiple times in the Excel document, you only have to translate it once. Here’s your completed glossary (identical to EXW-Sample-Glossary.doc which is included in your EXW package):

This is the glossary after you have added the target-language side

Checkliste für Inflight-Test Ultra Light Carpet	Checklist for Inflight Test Ultra-Light Carpet
Interne Projekt Nr. 50050 / PO 339931	Internal Project No. 50050 / PO 339931
Qualität:	Quality:
Ultra Light Carpet, 100% PES, Gewicht 880 gr./m2	Ultra Light Carpet, 100% PES, Weight 880 g/m2
Artikel: 81568 / 992	Article No.: 81568 / 992
Breite 127 cm	Width 127 cm
Legort: Gang	Location: aisle
Flugzeug Typ:	Aircraft type:
Installationsmerkmale	Installation notes
Bewertung	Rating
sehr gut	very good
gut	good
genügend	sufficient
ungenügend	insufficient
Flexibilität des Teppichs	Flexibility of carpet
Haftung mit Microplast	Bonding with Microplast
Verbrauch Microplast	Microplast consumption
Schneidbarkeit / Zuschnitt	Cuttability / precuts
Verlegbarkeit	Layability
Kurbeln der Schnittkante	Serging of edges

Running T4T-EXW – Overwriting the Excel file



1. Click on “Add File” to let T4T-EXW load your glossary (in our case, you can choose EXW-Sample-Glossary.doc (included in the package for testing). The name of your glossary will appear in the large text box at the top of the control panel (file name is not shown in the above screenshot).
2. Select “Translate strings from glossary” and “Color strings found in glossary”. Then click on “Translate”.

The result:

1	Checklist for Inflight Test Ultra-Light Carpet				
2					
3	Internal Project No. 50050 / PO 339931				
4					
5	Quality:				
6	Ultra Light Carpet, 100% PES, Weight 880 g/m2				
7	Article No.: 81568 / 992				
8	Width 127 cm				
9	Location: aisle				
10	Aircraft type:				
11					
12					
13	Installation notes	Rating			
14		very good	good	sufficient	insuffic
15	Flexibility of carpet				
16	Bonding with Microplast				
17	Microplast consumption				
18	Cuttability / precuts				
19	Layability				
20	Serging of edges				
21	Additional info Thomson Fly:				
22					
23					
24					
25					

This is what the Excel document looks like after it has been overwritten. Remember that coloring the text red is optional (but ideal for testing).

Demo mode notes

The demo mode disables some features and makes using T4T-EXW so annoying you'll want to buy this great tool right away.

Known bugs

None.